



THE 453

ANTIGONE

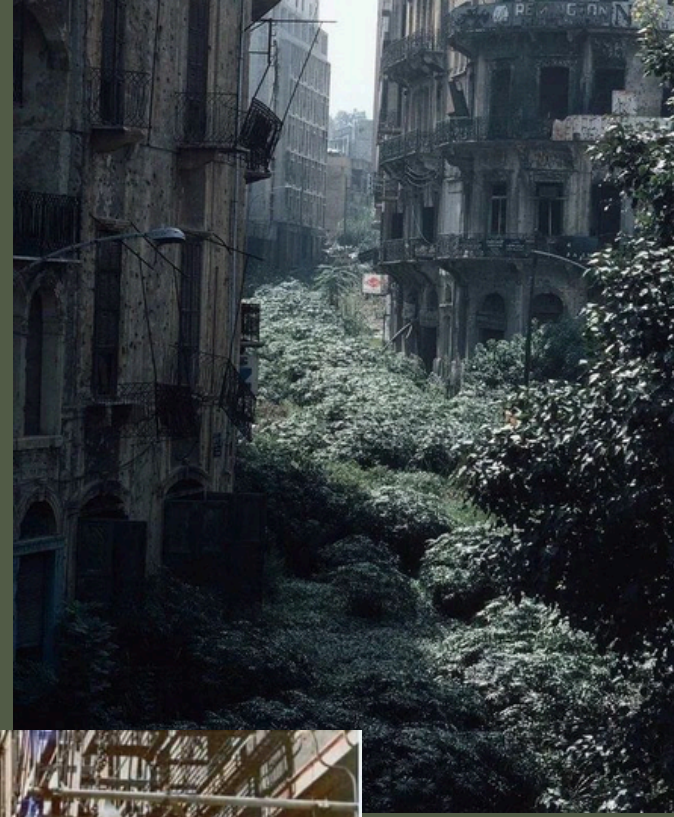
Scenic Design Final

H. Schreefel

Concept STATEMENT

This scenic design draws from Ancient Greek architectural conventional forms, while presenting a modernized look that reflects the combination of Ancient Greek architecture and the after-effects war on a country. Anouilh's version of Antigone is similar to Sophocles's, but he drops in small modern nods that alters the plays tone and complexity.

Inspiration Images

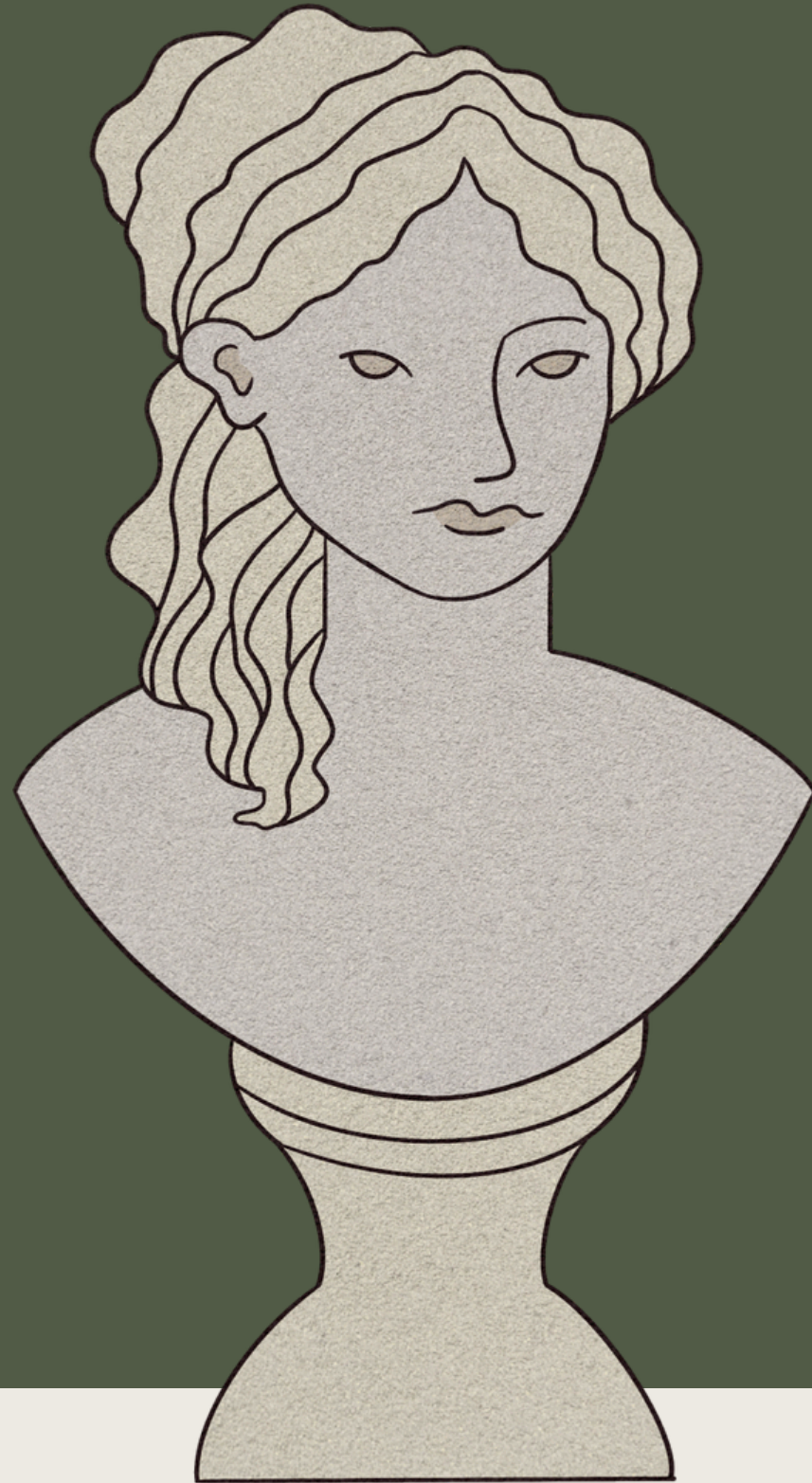


난봉군.
회전.
engine
다[내리
전 속도
~s up
다].
d); re-
ving.
i-] vt
fan |
우.
U 재
다.
=b

rév-el-ry [révalri] n. [종종 pl.] 술
머들어담 [홍청거림], 환락 (merrymak
rév-e-nant [révãnd:z, -nãnt] n.
세계에서 돌아온 자; 망령.
*re-vé-ge [rivévdz] n. U 1
(vengeance), 앙갚음
부. 2 복수심, 유한(遺恨). 3 [親] 친
기회. by one of Time's ~s 흔히
그 짓곳은 운명으로, 기구하게도. 2
person his ~ 설복전에 용하다.
[take] one's ~ 복수하다, 원한을
in ~ of [親] 앙갚음으로. seek
~ on [親] 복수할 기회를 얻
수하 [親] 앙갚음으로. seek
+ (VENGE): (~
n) a per



Characters



Antigone- Daughter of Oedipus, Sister to Euridice, Eteocles, & Polynices

Creon- Antigone's Uncle, King of

The Prologue- Announcer/ Chorus Leader

Haemon- Son of Creon, Fiance to Antigone

Ismene- Daughter of Oedipus, Sister to Antigone, Eteocles, & Polynices

The Nurse- traditional figure in Greek play, motherly figure

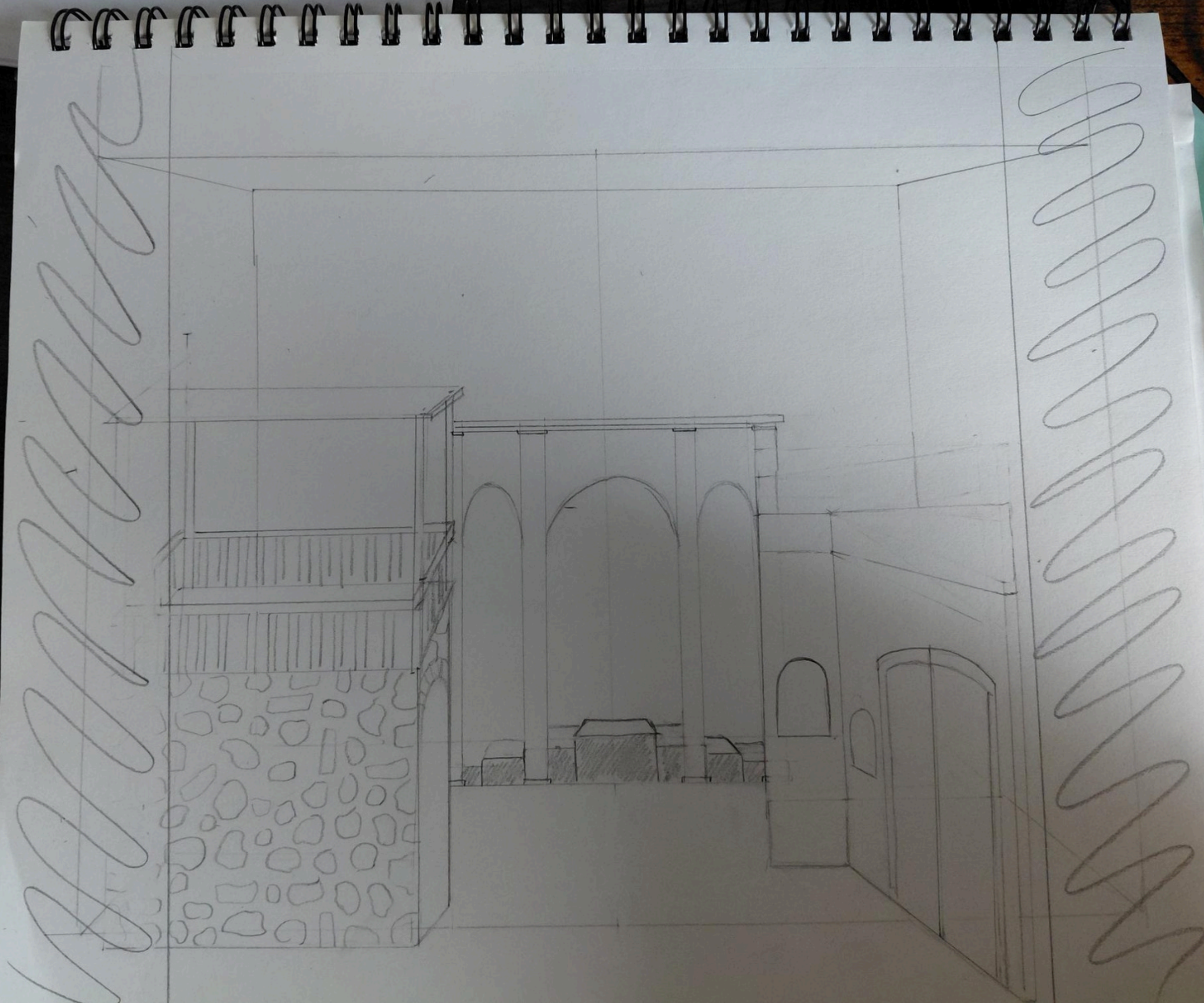
The Messenger- traditional figure, usually a boy, messenger (of death)

Three Guards- They are the guards of the castle, but also double as interpolations who represent the fascist collaborators of Anhouils play.

Euridice- Creon's wife, kind & Gentle, quietly knitting

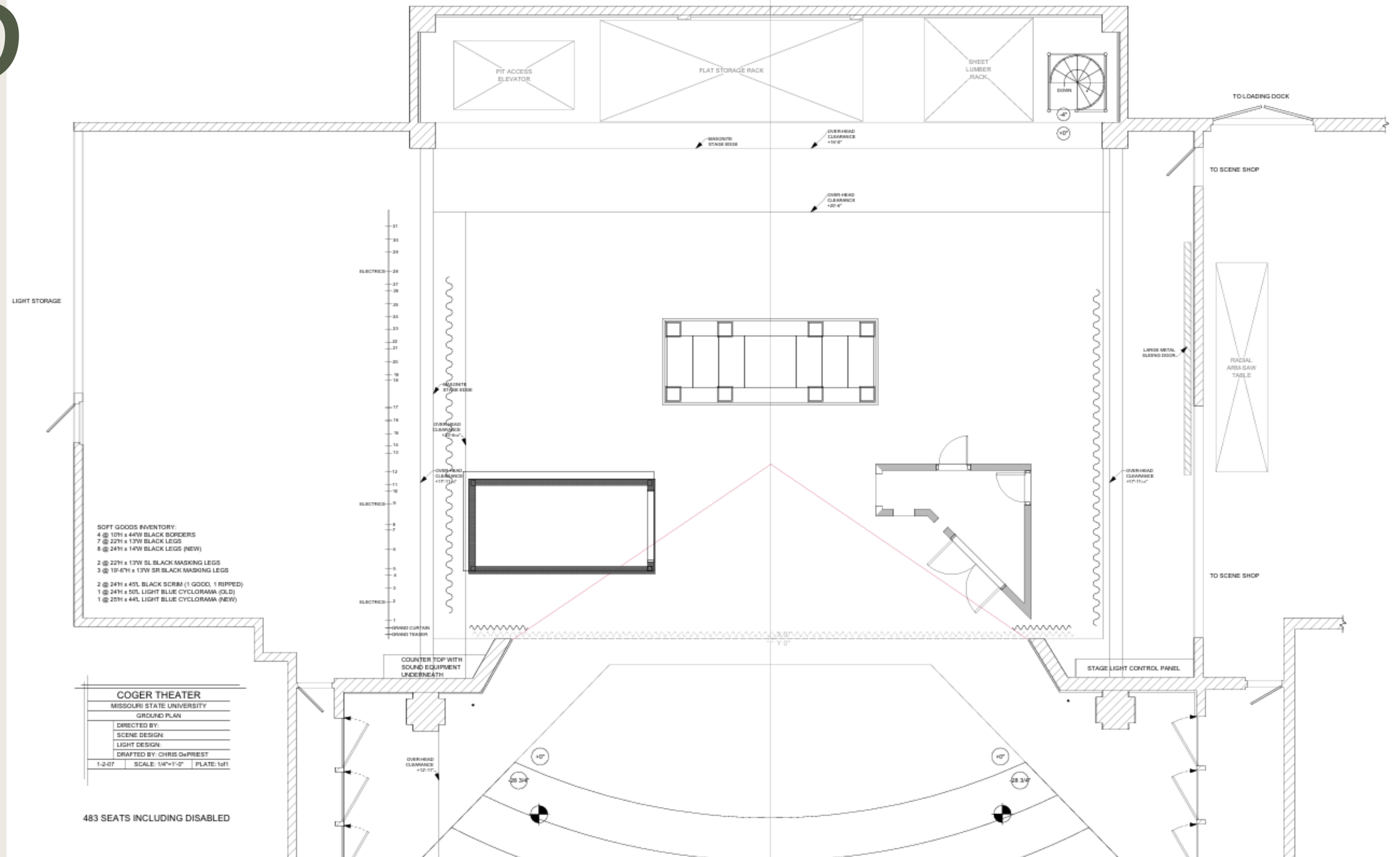


Rendering / Sketch



GROUND PLAN

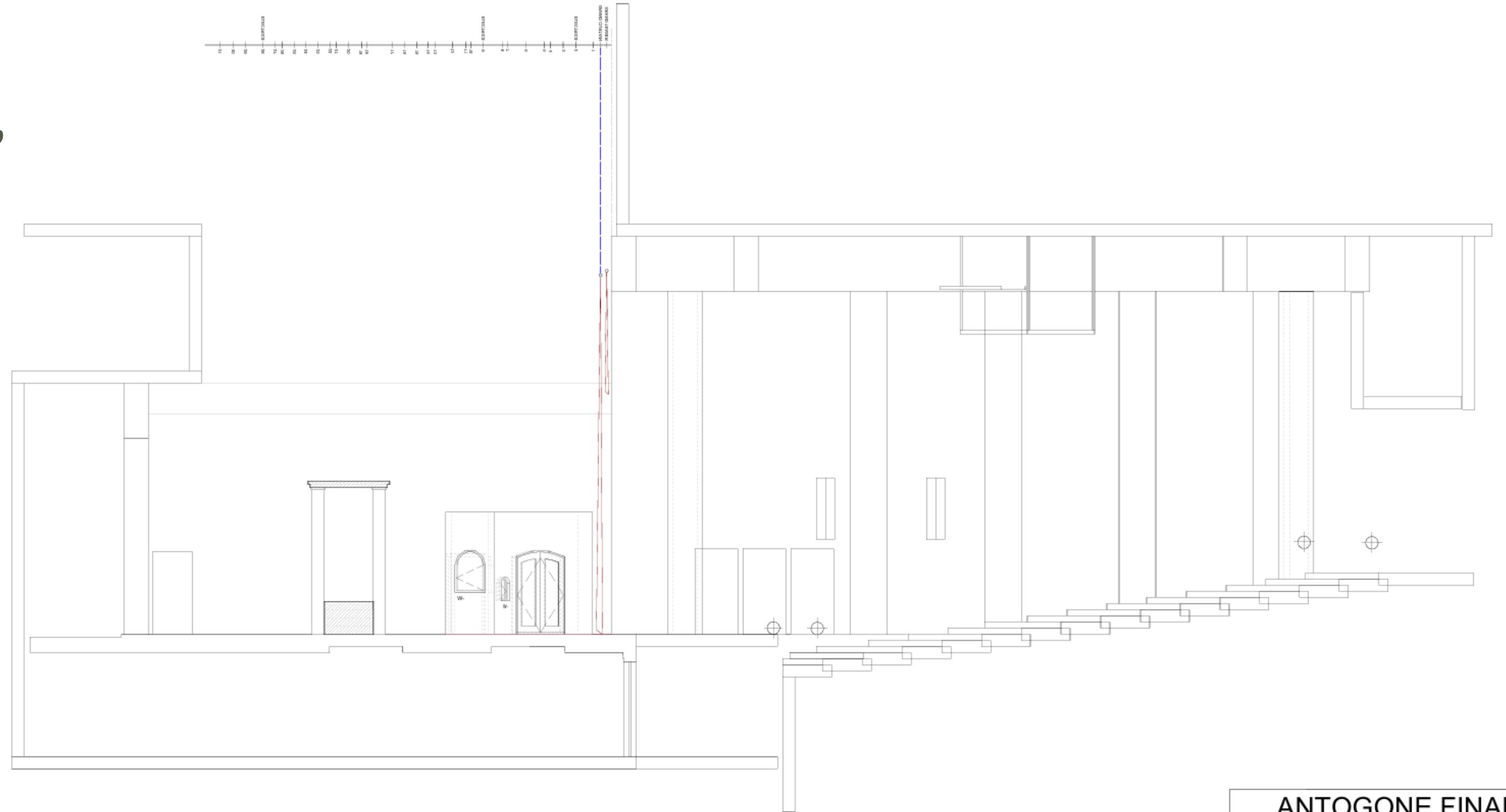
Vectorworks Educational Version



PERSPECTIVE VIEW



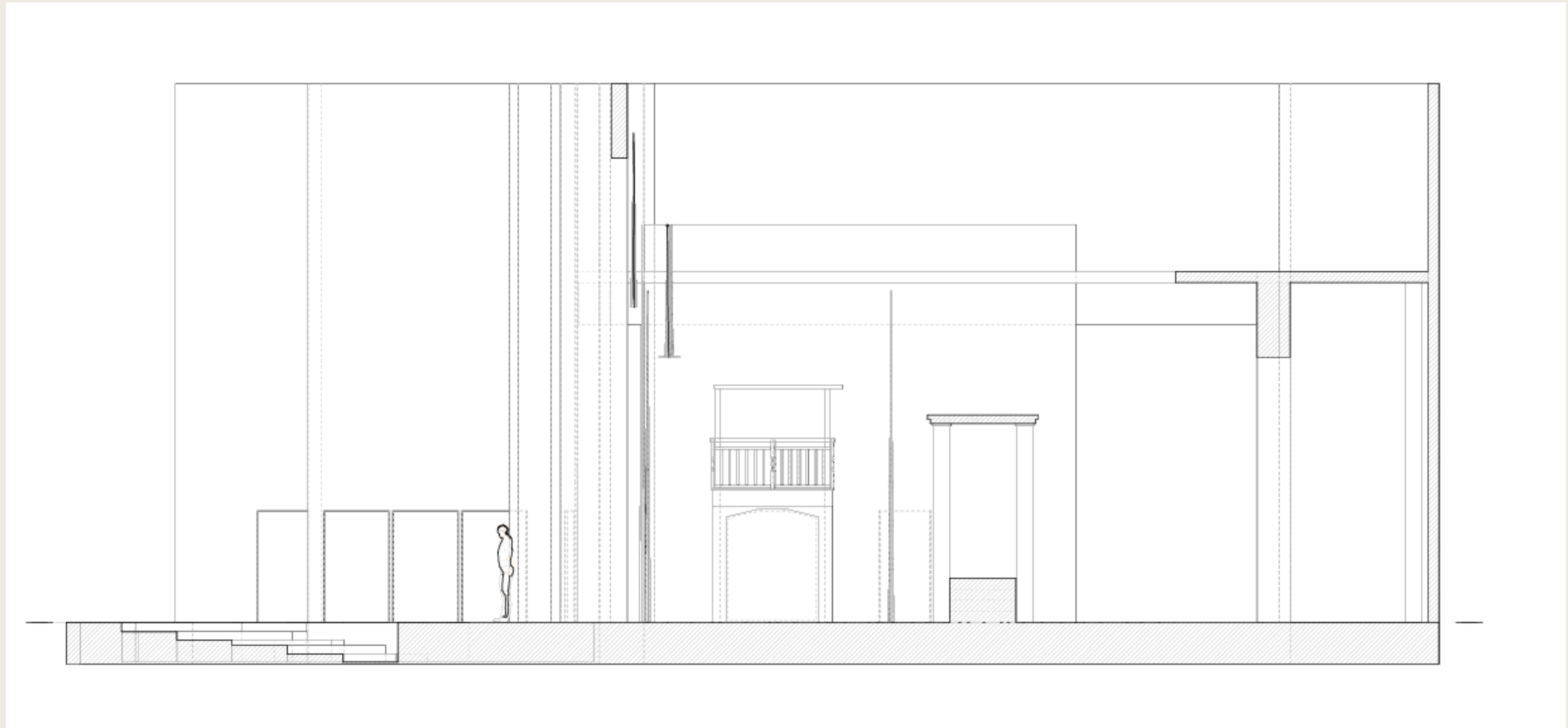
CENTER LINE SECTION SL



ANTOGONE FINAL

CENTER LINE SECTION

S R

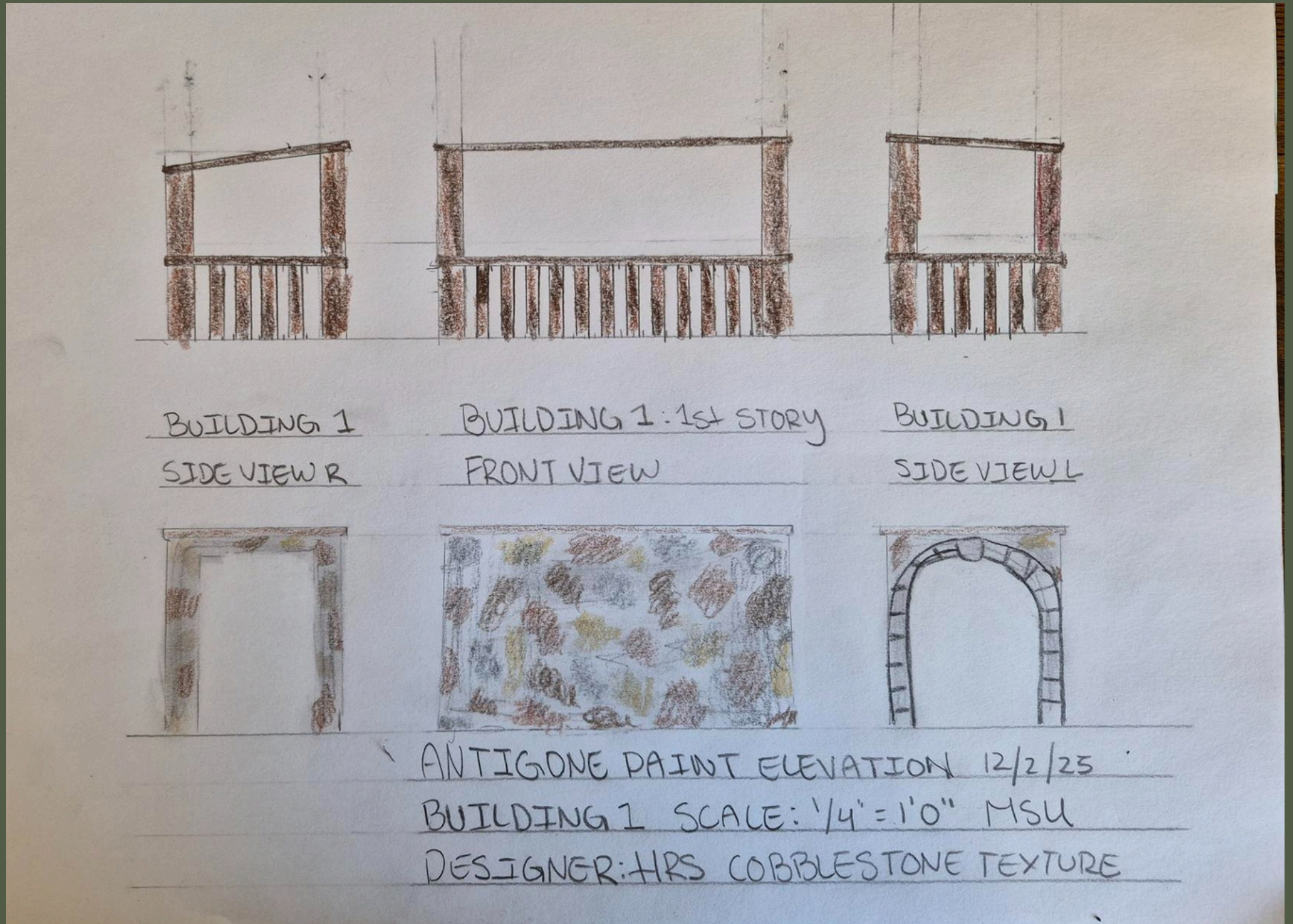


BUILDING 1 SR

COBBLESTONE BUILDING WITH ARCHWAY DOOR FACING ONSTAGE
• 2ND STORY MADE OF WOOD

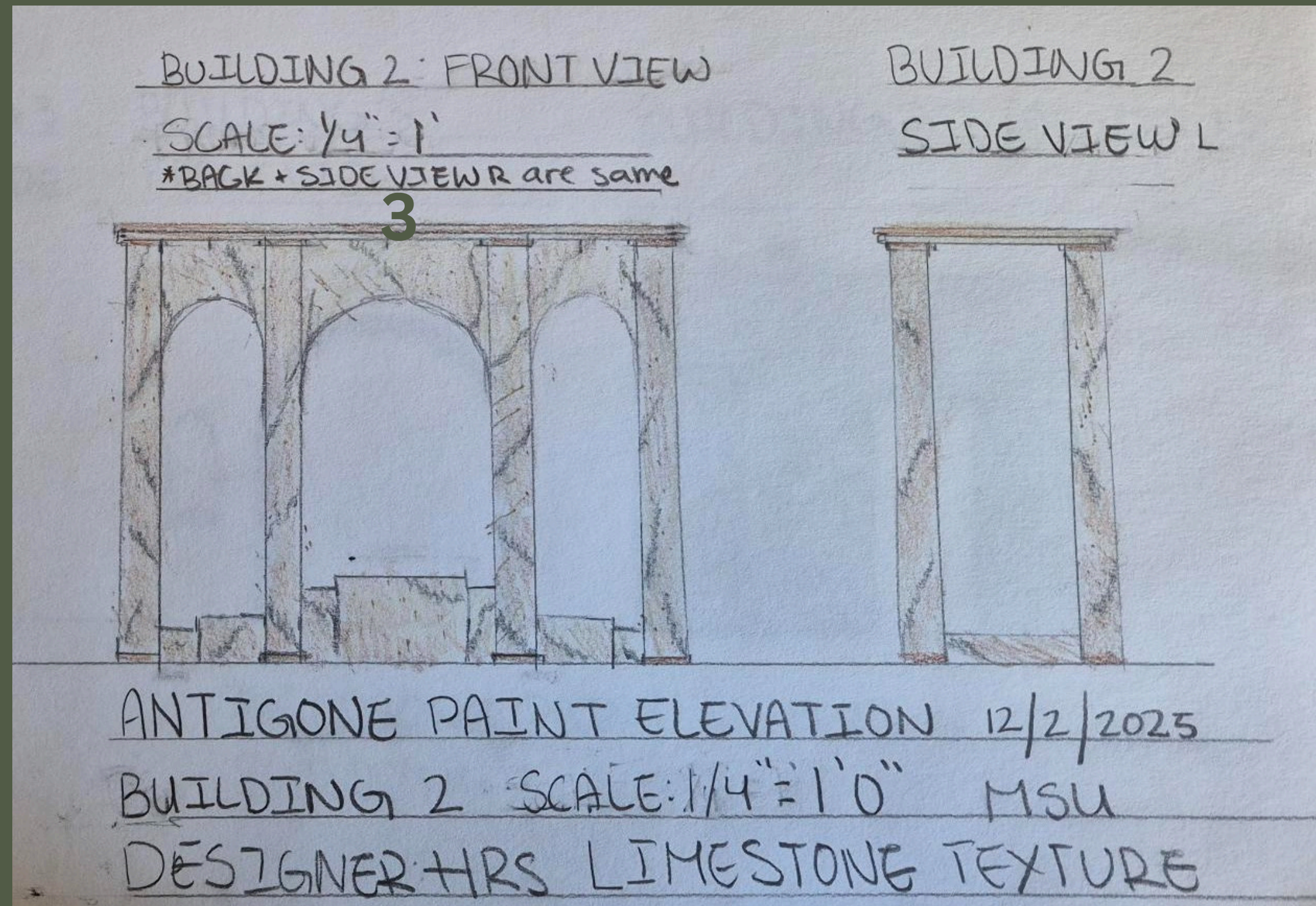
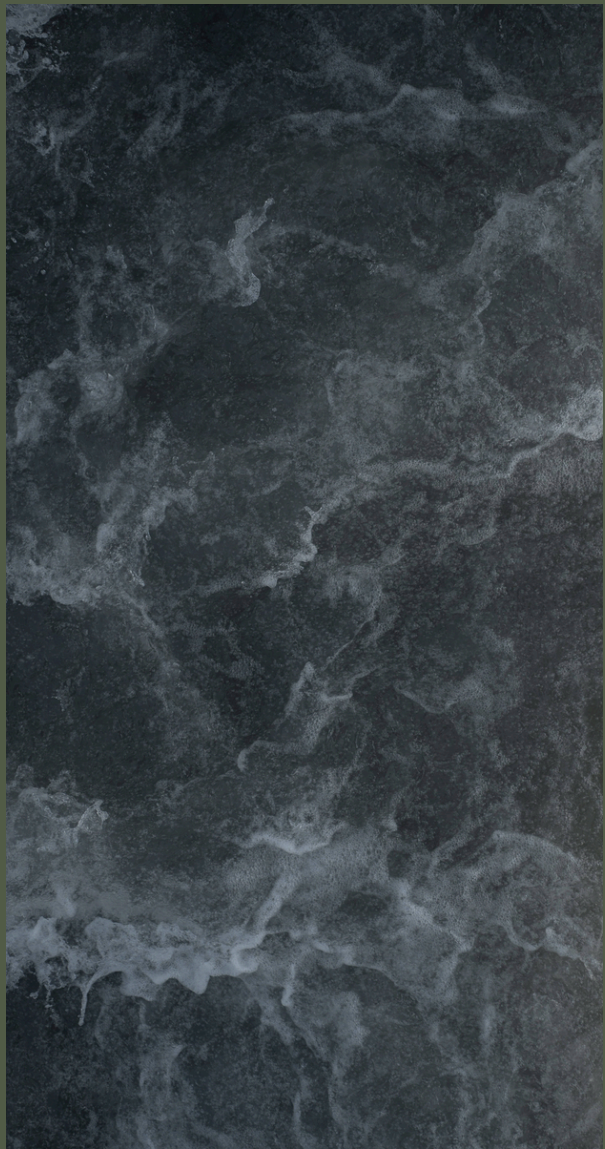


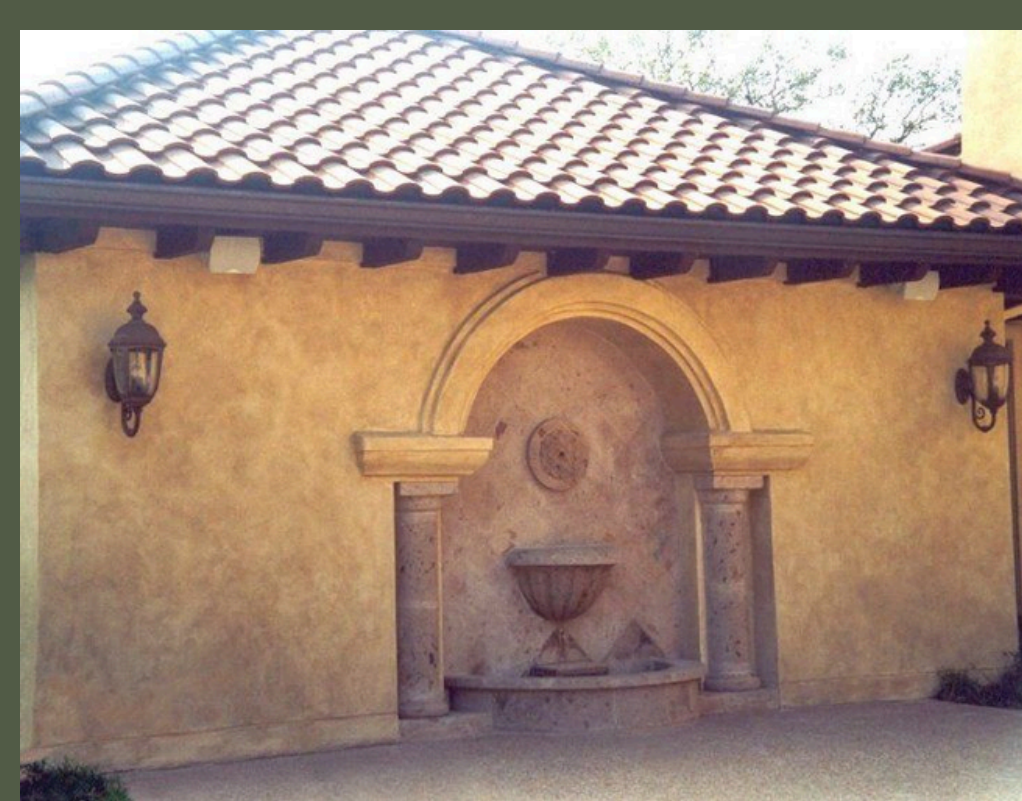
shutterstock.com · 1614569344



BUILDING 2 CS

MARBLE STAIRCASE REMINICENT OF TEMPLE ARCHITECTURE
- limestone texture under marble for extra dimension





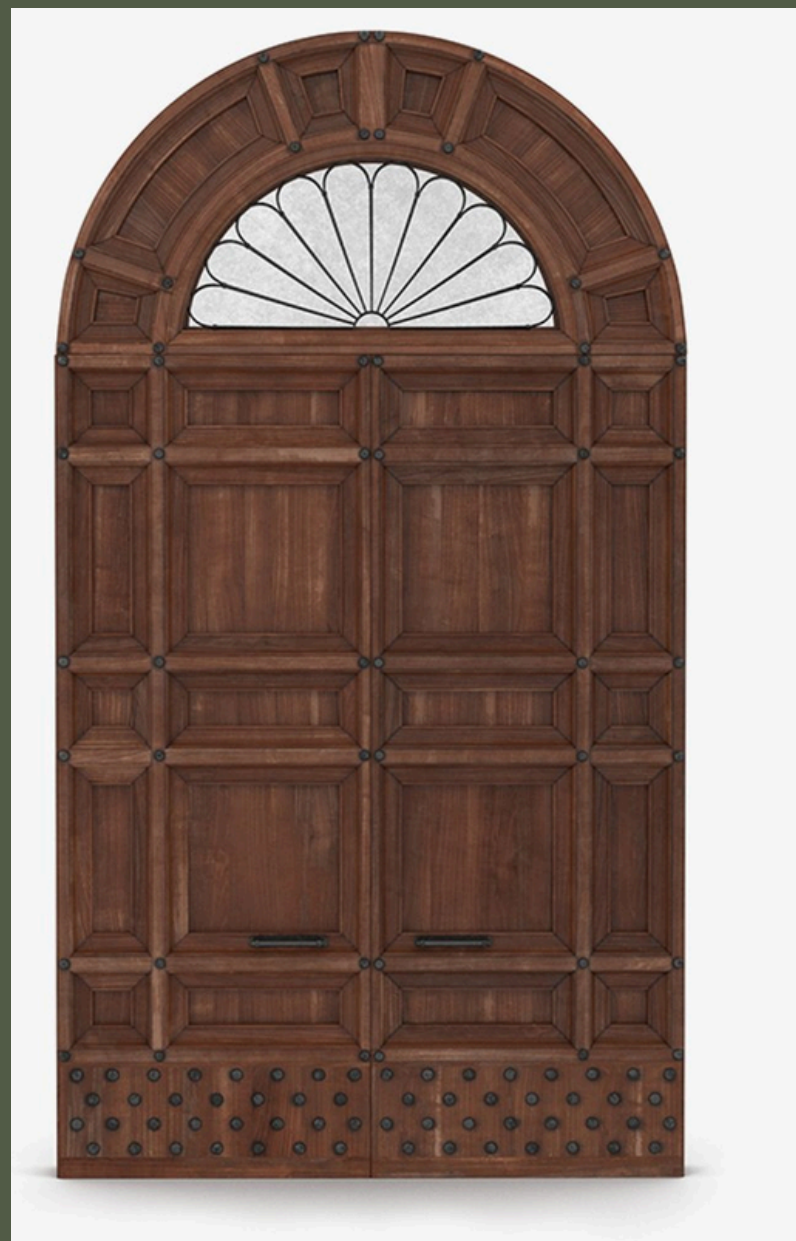
BUILDING 3 SL

Greco- Roman stucco style house

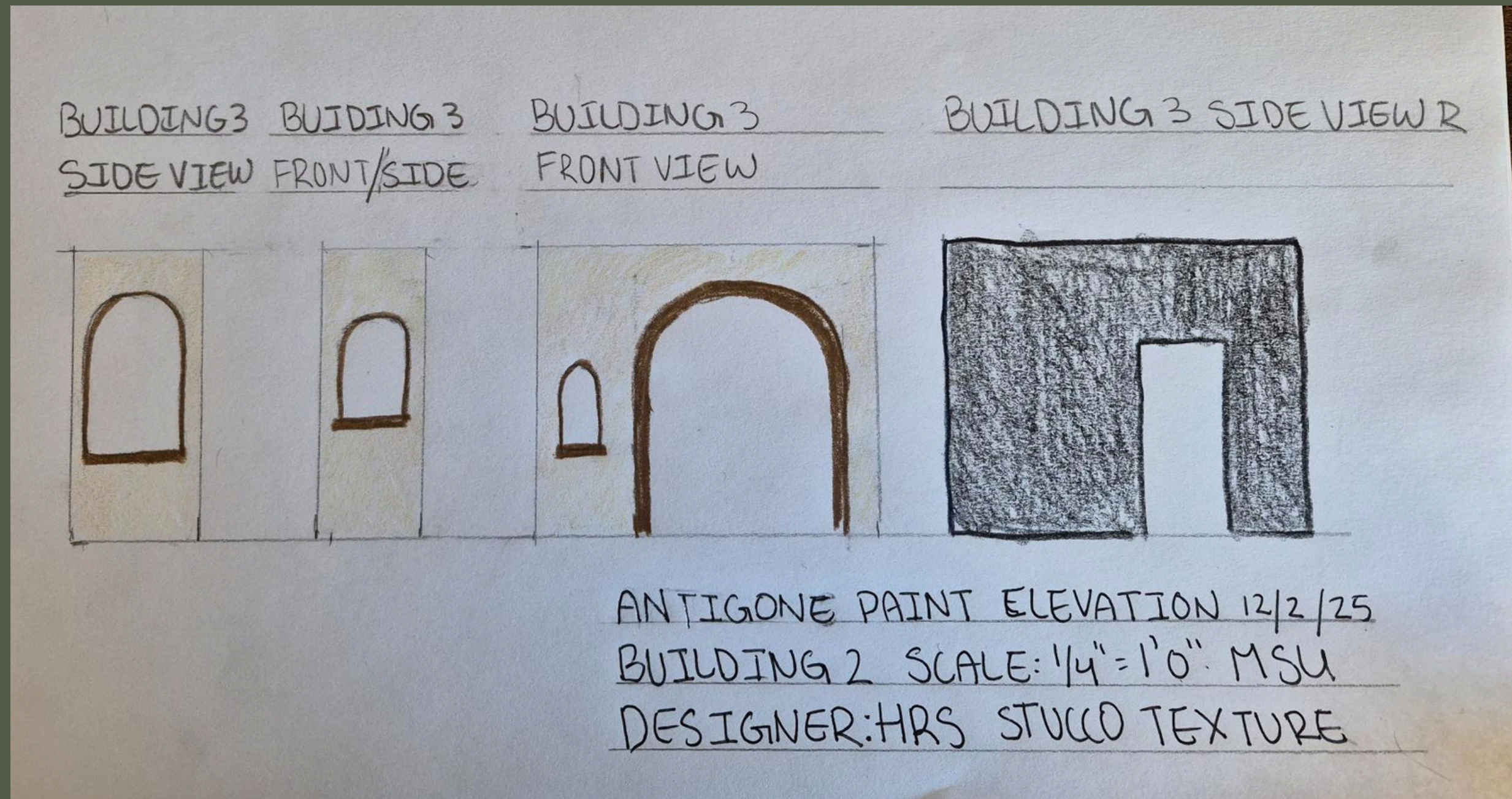
- beige w/ blue tint
- dark walnut double door

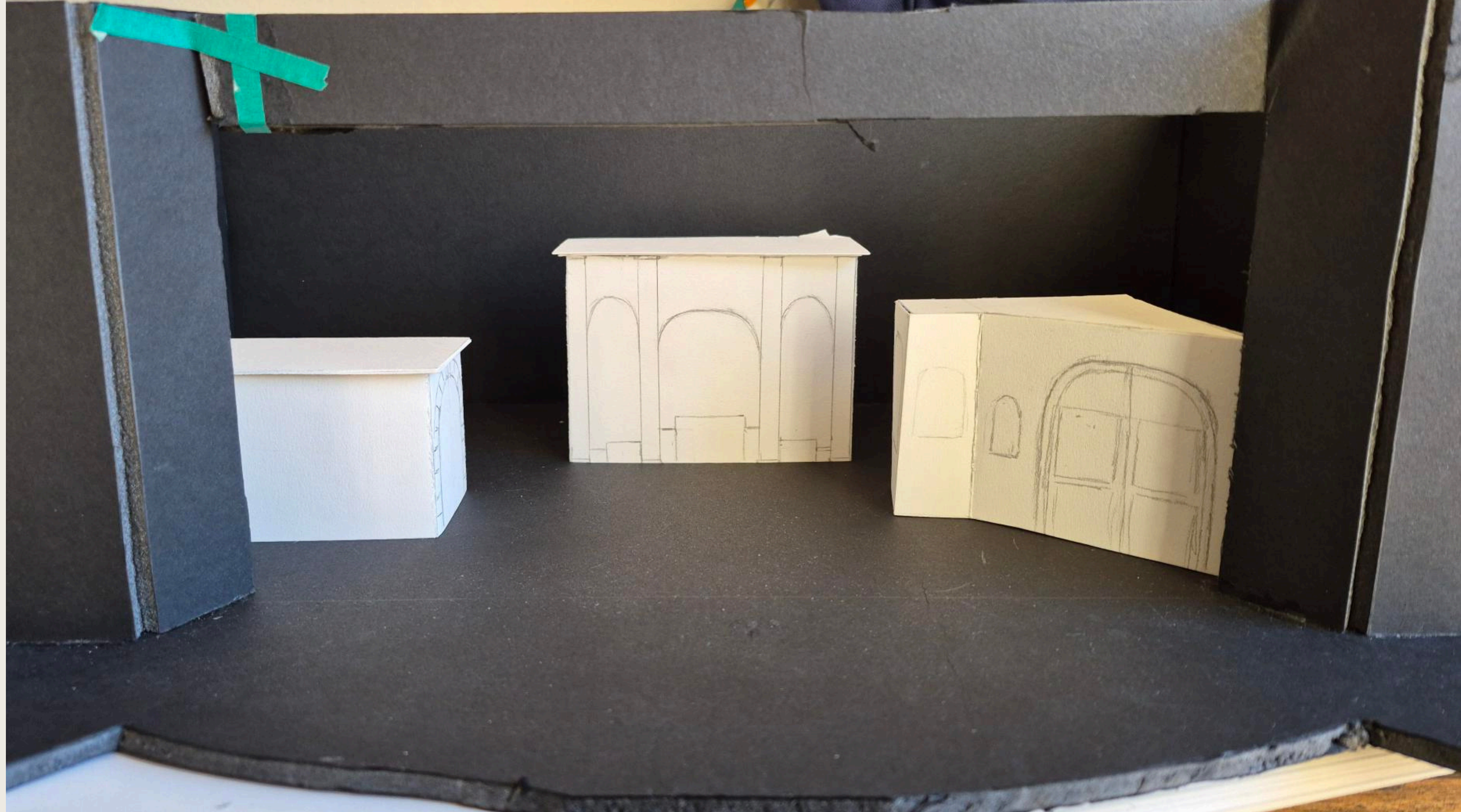


stucco texture with sawdust mix



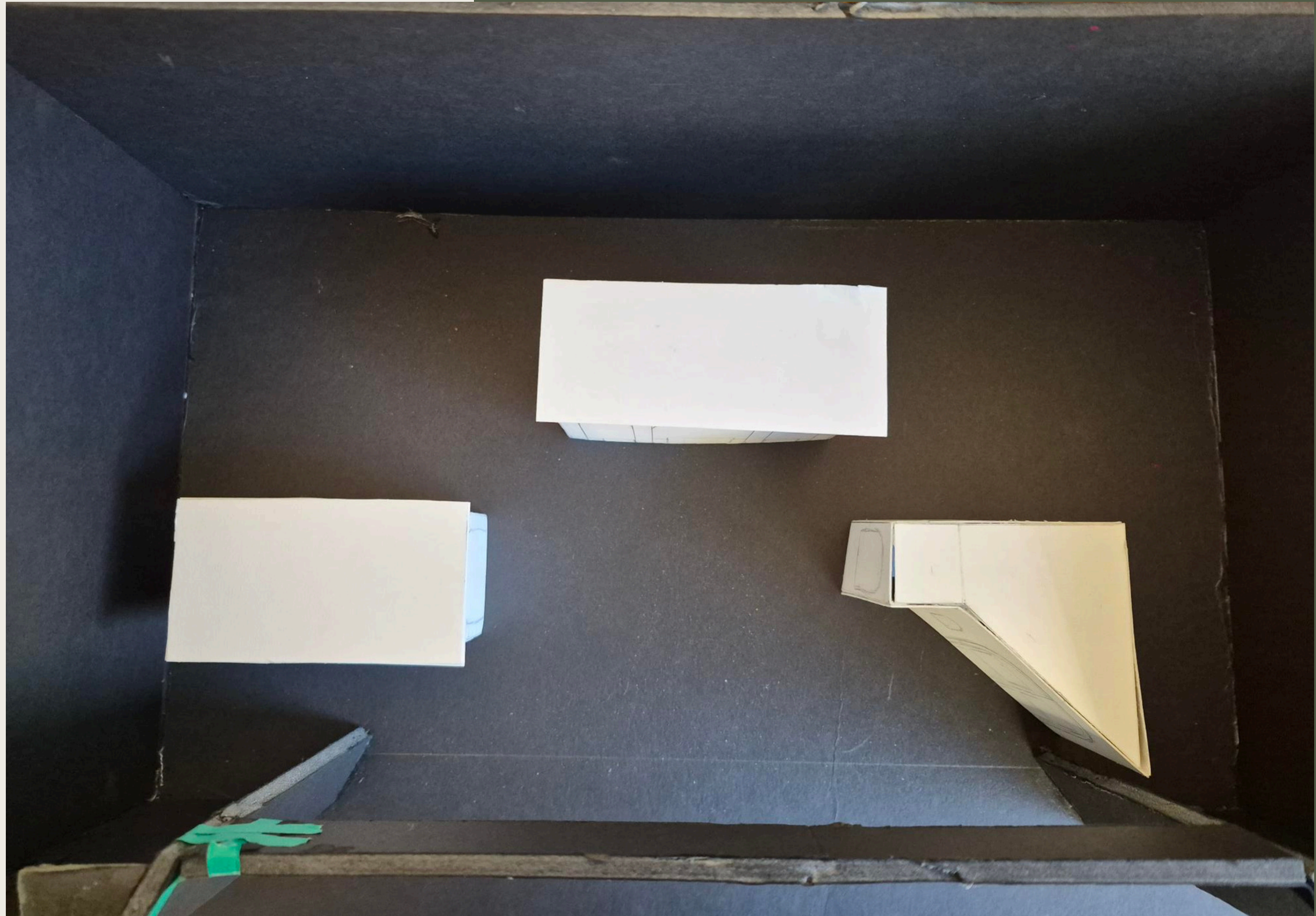
paint treatment for the door





**SCENIC WHITE
MODEL**

**SCENIC
WHITE
MODEL**



Costumes



Ways to wear the palla

ANCIENT GREECE c. 600-480 BC





Thank You!

QUESTIONS?

